



**R**

**R-EVOLUTION**  
GORILLA / QUICK SHIFTER

**GORILLA** ★  
RACE PARTS

**QUICK SHIFTER**  
**INSTALLATION GUIDE**  
GORILLA R-EVOLUTION



SIMPLE INSTALLATION GUIDE FOR THE

# QUICK SHIFTER R-EVOLUTION



**DISCLAIMER:** DO NOT attempt to install the product if you do not have basic mechanical knowledge, GORILLA RACE PARTS and its distributors will not be responsible for any loss or damage caused by improper installation or configuration. Please read the instructions carefully.

## WIRING CONNECTION

To begin the installation, you must remove the fuel tank, air filter box or whatever is necessary depending on the motorcycle model so that you have access to the ignition coil (s).

- 01** Connect the black wire with ring terminal to ground or to the battery negative. Make sure the connection is of good quality. (1)

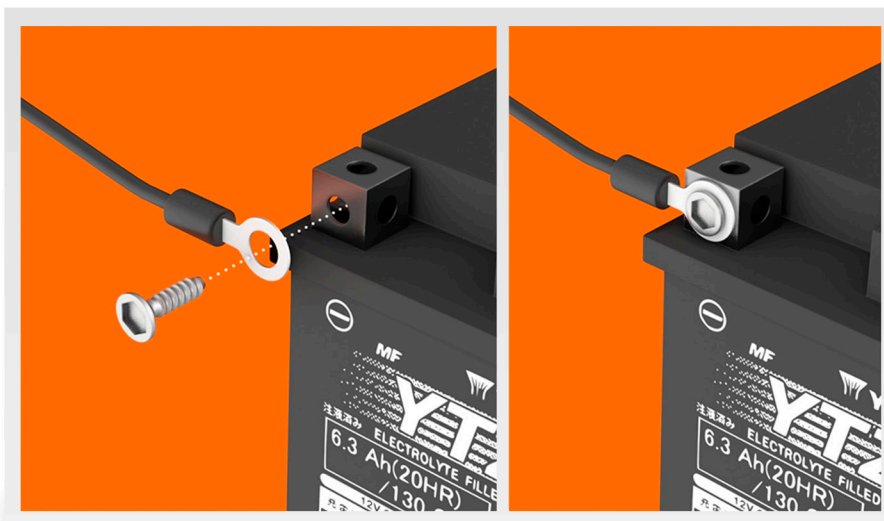


FIGURE 01



## SIMPLE INSTALLATION GUIDE FOR THE **QUICK SHIFTER** R-EVOLUTION

**02** On coil 1, you must check which is the positive cable and which is the signal cable. For this, the coil card must be disconnected and the key of the motorcycle put in ON. With a multimeter or pole searcher measure which of the cables has tension. This will be the positive, and the remaining cable will be the signal wire. (2)



FIGURE **02**

**03** Connect the Gorilla red cable to the positive cable of the coil identified in the previous point and the Gorilla light blue cable to the signal cable of the same coil. (3)

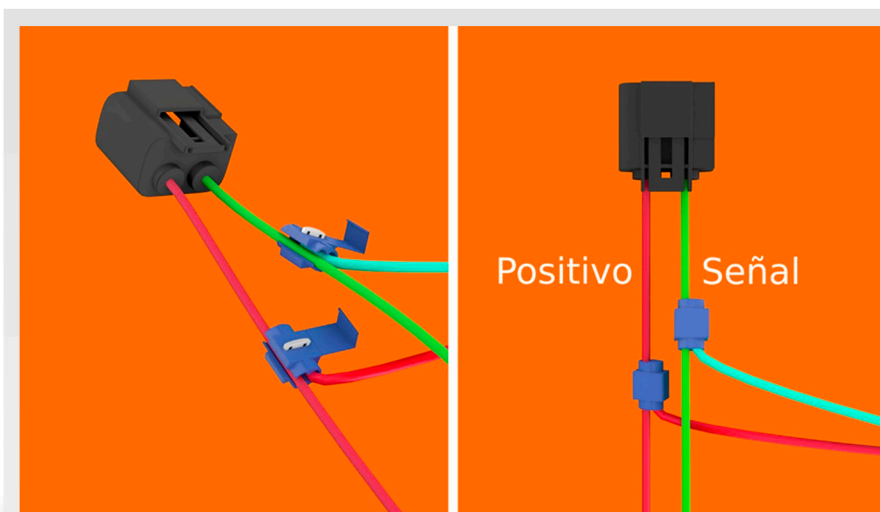


FIGURE **03**



## SIMPLE INSTALLATION GUIDE FOR THE **QUICKSHIFTER** R-EVOLUTION

**04** The remaining three Gorilla yellow wires must be connected to the signal cable of coils 2, 3 and 4. (4)

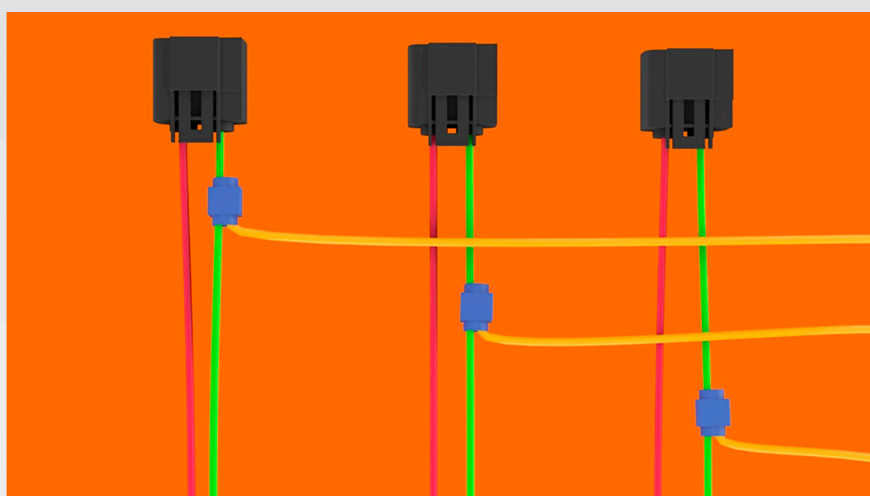


FIGURE 04

**05** (\*) Some motorcycles have a second ground cable that reaches the coil. In these cases, it must be identified by measuring continuity with a multimeter between ground and the connection plug, with the key of the motorcycle in OFF. The remaining cable is the signal cable, to which the Gorilla red wire must be connected (the second mass cable of the coil must not be connected to the quick shifter). (5)

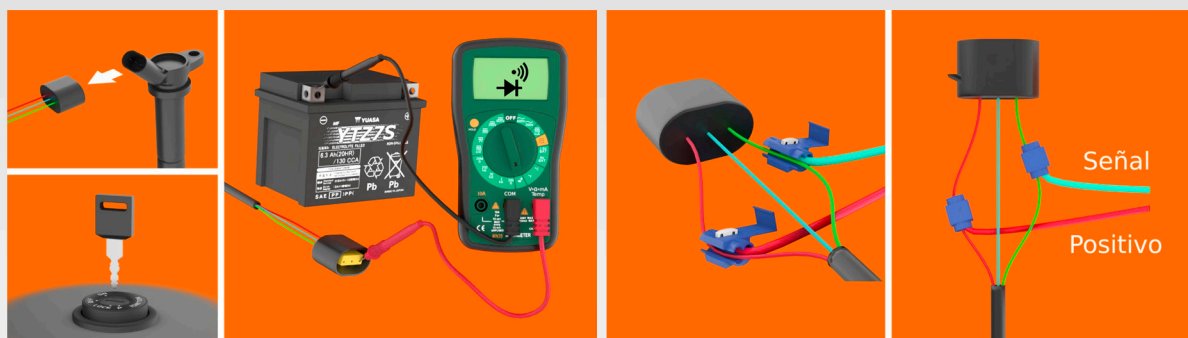


FIGURE 05



### Notes:

(1) The proper functioning and life of the system depend on a correct installation. Motorcycles both idling and running experience vibrations and poor installation will affect both the proper functioning of our precise gearshift system and the duration of its components.



## SIMPLE INSTALLATION GUIDE FOR THE **QUICK SHIFTER** R-EVOLUTION

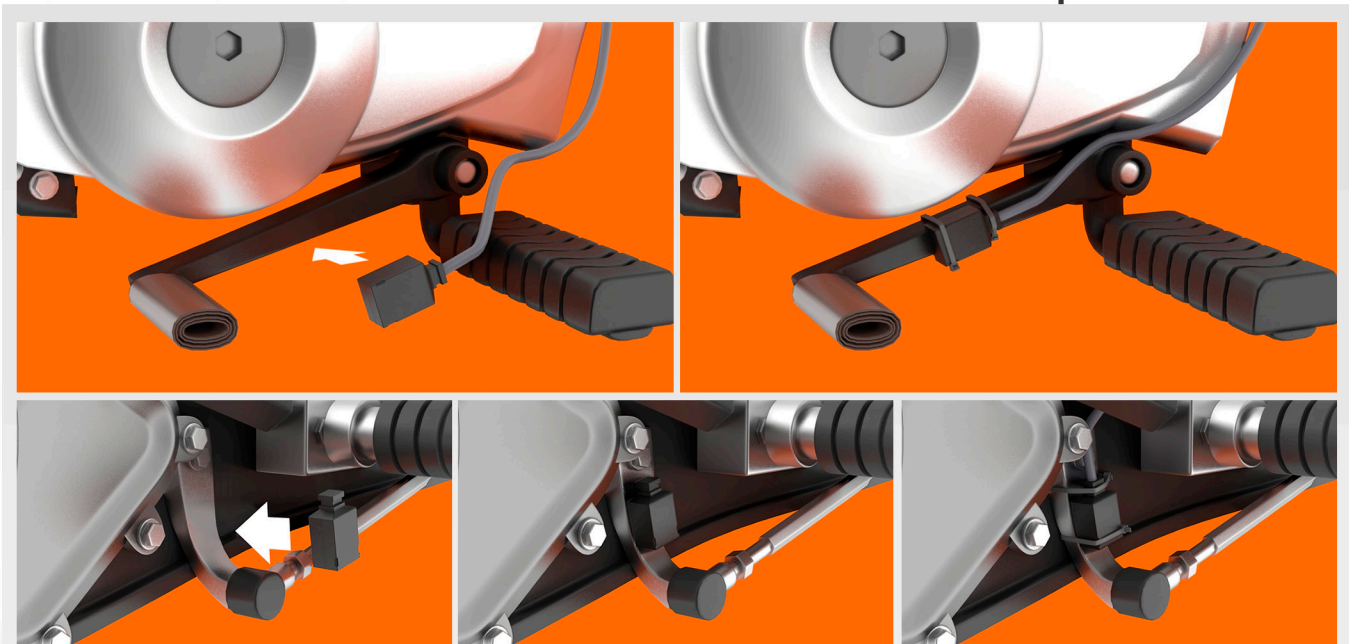
### SHIFT SENSOR ASSEMBLY

Place the shift sensor (on the large flat faces) on the gearshift, on the cam that is on the axis of the case or in any of the mechanisms that have rotation and hold it firmly with two clamps always trying to make it the least exposed possible before possible blows. (6)

Pass the shift sensor cable through the engine compartment and connect its electrical connector to the Quick Shifter Gorilla R-Evolution control unit.

The direction of sensor activation can then be modified by entering to the Quick-Shifter from the App. From our website [www.gorillaraceparts.com](http://www.gorillaraceparts.com) or from our App you can visualize the 3D video showing step by step how to correctly install the quick-shifter.

FIGURE 06



#### Notes:

Keep cables away from hot or aggressive parts during installation of quick-shifter on the bike. Excessive proximity or contact with these components may cause damage or malfunction.

#### Notes:

(1) For the correct operation it is essential that the Shift Sensor is firmly secured in its fixing points through seals or clamps. Figure 6

(2) The proper functioning and life of the system depend on a correct installation. Motorcycles both idling and running experience vibrations and poor installation will affect both the proper functioning of our precise gearshift system and the duration of its components.



## SIMPLE INSTALLATION GUIDE FOR THE **QUICK SHIFTER** R-EVOLUTION

### ELECTRONIC MODULE ASSEMBLY

Place the electronic control panel in a safe place on the motorcycle. Eg Chassis, under the back seat, etc. (7) It is essential for the correct operation and durability of the quick-shifter that it remains firmly attached at its fixing points by the help of screws or clamps.



FIGURE 07



#### Notes:

The proper functioning and life of the system depend on a correct installation. Motorcycles both idling and running experience vibrations and poor installation will affect both the proper functioning of our precise gearshift system and the duration of its components.

[www.gorillaraceparts.com](http://www.gorillaraceparts.com)

  [gorillaraceparts](#)

[gorillaraceparts@gmail.com](mailto:gorillaraceparts@gmail.com)

 **GORILLA**  
RACE PARTS

